



# **Lexington Medical Center**

**Each Step Lexington Medical Center Takes  
Brings Us Closer To A Sustainable Tomorrow.**

**LEXINGTON MEDICAL CENTER'S  
AIR QUALITY IMPROVEMENT  
INITIATIVES**



# TOBACCO-FREE ENVIRONMENT INITIATIVE:

## “A BREATH OF FRESH AIR”



All the hospitals in the metropolitan area went smoke free November 15<sup>th</sup> 2007. LMC had over 600 smokers at the time. This reduced **Benzene, Formaldehyde, Ammonia & Acetone** fumes from the smoke from being released into the air.

# Lexington Medical Center Goes Mercury Free

2003 LMC participated in the American Hospital Associations Mercury Elimination Program and reduced about 97% of the mercury used on campus.



Mercury Fact: The U.S. EPA ranks the health care sector as the fourth-largest source of mercury air emissions due to their contribution to medical waste incinerators. LMC incinerates less than 5% of it's Medical Waste.

# Our Public Safety Department Implemented a Bike Patrol in 2007



The officers patrol the parking lots and ground of the main campus buildings during the warmer months. This program allowed us to keep one of our patrol vehicles off the road during 4 months of 2007. This reduced our carbon emissions during that period by over a ton.

We installed bike racks and showers in our new office building to promote employee bike riding.



# Medical Record's Promotes Air Quality Through Telecommuting.

LMC's Medical Records department learned that it could save space, reduce travel expenses for employees and reduce carbon emissions by allowing staff to telecommute from home.

Medical records currently has over 65 employees telecommuting from home (most are transcriptionist)



If those 65 employees commuted and average of 15 miles round trip to work for 260 days per year and drove a car that got 24 miles to the gallon we saved **93 Tons of CO2**

# Environmental Services Goes Green

Did you know that all the cleaning supplies except one are **GREEN** Products.  
Eliminate VOC's from the air



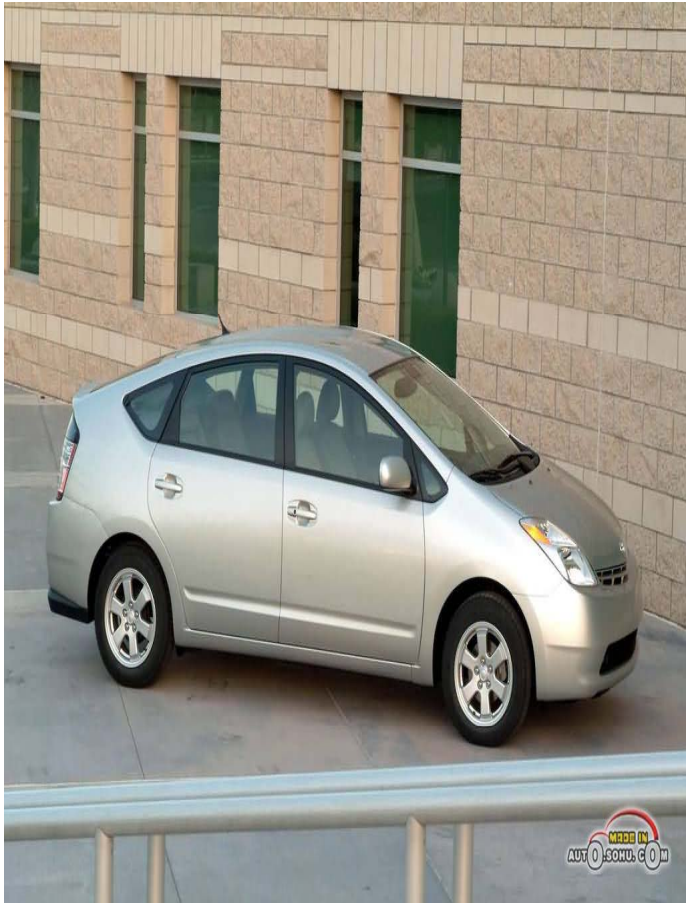
Environmental Services  
uses recycled paper  
products:

**Paper towels**

**Toilet Paper**

**Tissue paper**

# Courier Service Drives to the Front of the Pack for Emission Reductions !!!!



Our courier / service fleet was able to reduce their carbon dioxide emissions by 80 tons during 2008 by replacing 4 of our 8 cylinder courier vehicles with Hybrid Prius. We will be expanding our fleet of hybrids by adding 2 more in the near future. The courier services also remapped routes in an effort to make them more fuel efficient. Our fleet of 51 vehicles produced 380 tons of carbon dioxide in 2007. We are on schedule to cut this by 21% in 2008



**Nature Approved.**



In August 2007 Lexington Medical Center opened the 1<sup>st</sup> L.E.E.D. Silver Certified Medical Building in South Carolina.

The building has energy management systems, environmentally friendly flooring, furniture a recycling designs built in to the system.

# What LMC currently Recycles!



- Cardboard
- Paper
- Plastic drink bottles
- Aluminum cans
- Batteries – Alkaline/  
Rechargeable
- Cooking oil
- Motor Oil
- Furniture
- Fluorescent bulbs
- Pallets
- Computer /electronic  
equipment

# LMC Environmental Facts

## LMC Recycling Efforts:

<u>Year</u>	<u>Pounds Recycled</u>	<u>% of Total Waste Stream</u>
2006	450,000 lbs	17%
2007	475,000 lbs	19%
2008(proj.)	593,323 lbs	25%



Be an employee  
that makes a  
difference!!!

Recycle



# Cardboard Recycling Impacts LMC In Several Ways.



We keep **100 Tons** of cardboard out of the midland's landfills.

**That saved:**

**1700 Trees**

**695,300 gallons of water**

**46,300 gallons of oil**

**58,700 lbs. of air pollution**

**900 cubic yards of landfill**

**407,700 kilowatt hours of energy**

## Human Impact of Recycling Cardboard at LMC!

In the past 12 months our cardboard recycling program has raised \$5,221 that was donated to the hospital's Emergency Care Fund.



These funds are used to assist employees that have experienced catastrophic personal losses such as: home fires, medical needs, and other personal losses.



Surgery and Materials Management  
Recycle Out of Date Medical Supplies  
for the Lexington County Animal Shelter  
to Provide Care for Animals



# Lexington Medical Center Takes The Lead in Environmental Sustainability and Stewardship



Lexington Medical Center becomes the first and only healthcare facility in South Carolina to meet the requirements for acceptance into the South Carolina Environmental Excellence Program. (2008)

S.C.E.E.P. is a voluntary program for companies that set and monitor environmental impact standards. Companies must have an outstanding environmental history and meet strict standards to become a member.

(left) Bob King Deputy Commissioner of DHEC presents members of LMC's Environmental Management Committee with their E.E.P. Flag

# Lexington Medical Center Takes The Lead in Environmental Sustainability and Stewardship

LMC wins 2008 Honorable Mention at the Carolina Recycling Association Conference in March for their Business Recycling Program.



LMC presents at the Columbia Pollution Action Council “Green Boot Camp for Business”

LMC shares their green vision with Lexington Middle School students on Career Day.

